

# Rittal – The System.

Faster – better – everywhere.

## Digital Brochure

ENCLOSURES

POWER DISTRIBUTION

CLIMATE CONTROL

IT INFRASTRUCTURE

SOFTWARE & SERVICES

FRIEDHELM LOH GROUP

[www.rittal.ca](http://www.rittal.ca)



# Rittal – The System.

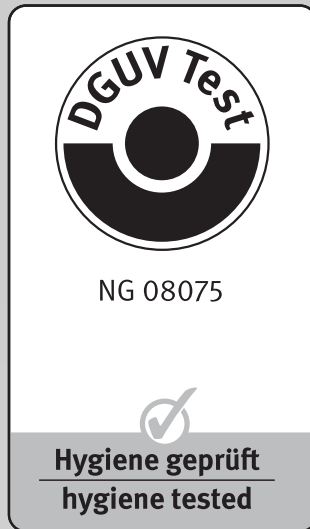
Faster – better – everywhere.



# Hygienic Design

## Small and Compact Housing HD

|                           |     |
|---------------------------|-----|
| Junction Boxes HD.....    | 162 |
| Compact Enclosure HD..... | 163 |
| Accessories.....          | 164 |



# Hygienic Design



HD accessories Page 164 System accessories Page 421 KL stainless steel Page 168

## Material:

- Housing and cover: Stainless steel 1.4301 (AISI 304), 1.5 mm
- Installation bracket: Carbon steel, zinc-plated, 2.0 mm
- Quick-release fasteners: Stainless steel
- Seal: Silicone, blue, dyed (RAL 5010), compliant with FDA Guideline 21 CFR 177.2600

## Surface finish:

- Housing and cover: Brushed, grain 400, peak-to-valley height < 0.8 µm
- Mounting plate: Zinc-plated

## Protection category IP to IEC 60 529:

- IP 66

## Protection category IP to DIN 40 050-9:

- IP 69K

## Protection category NEMA:

- NEMA 13

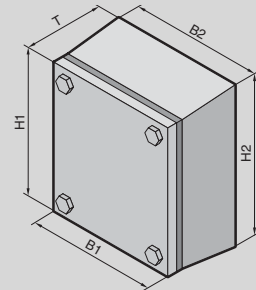
- NEMA 3R
- NEMA 4X

## Supply includes:

- Housing of all-round solid construction
- Cover
- Installation bracket (pre-assembled)
- Seal and quick-release locks (supplied loose)

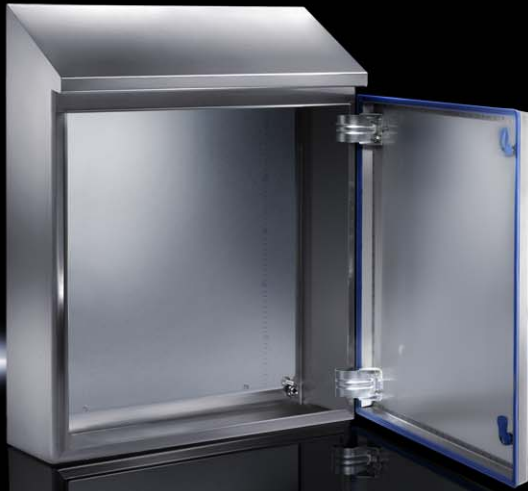
## Technical details:

Available on the Internet



## Junction boxes HD

| Height (front) (H1) inches (mm) | Packs of  | 6 (150)         | 6 (150)         | 8 (200)         | 8 (200)         | 8 (200)         | 12 (300)        | Page |
|---------------------------------|-----------|-----------------|-----------------|-----------------|-----------------|-----------------|-----------------|------|
| Height (rear) (H2) inches (mm)  |           | 7 (17)2         | 7 (177)         | 9 (227)         | 9 (227)         | 9 (227)         | 13 (327)        |      |
| Width (front) (B1) inches (mm)  |           | 6 (150)         | 6 (150)         | 8 (200)         | 12 (300)        | 16 (400)        | 16 (400)        |      |
| Width (rear) (B2) inches (mm)   |           | 7 (172)         | 7 (177)         | 9 (227)         | 13 (327)        | 17 (427)        | 17 (427)        |      |
| Depth (T) inches (mm)           |           | 3 (80)          | 5 (120)         | 5 (120)         | 5 (120)         | 5 (120)         | 5 (120)         |      |
| <b>Model No.</b>                | 1 pc(s).  | <b>1670.600</b> | <b>1671.600</b> | <b>1672.600</b> | <b>1674.600</b> | <b>1675.600</b> | <b>1676.600</b> |      |
| <b>Accessories</b>              |           |                 |                 |                 |                 |                 |                 |      |
| Wall Spacer Bracket HD          | 1 pc(s).  | 4000.100        | 4000.100        | 4000.100        | 4000.100        | 4000.100        | 4000.100        | 164  |
| Mounting Plates                 | 1 pc(s).  | 1560.700        | 1560.700        | 1562.700        | 1563.700        | 1564.700        | 1568.700        | 507  |
| Support Rails TS 35/7.5         | 10 pc(s). | 2314.000        | 2314.000        | 2315.000        | 2316.000        | 2317.000        | 2317.000        | 530  |
| Cable Gland HD                  |           | see page        | see page        | see page        | see page        | see page        | see page        | 568  |



HD accessories Page 164 System accessories Page 421 AE stainless steel Page 175 Rails for interior fitting HD Page 165

### Material:

- Housing and door: Stainless steel 1.4301 (AISI 304)
- Mounting plate: Carbon steel
- Lock inserts HD: Stainless steel 1.4404 (AISI 316L)
- Seal: Silicone, blue, dyed (RAL 5010), compliant with FDA Guideline 21 CFR 177.2600

### Surface finish:

- Housing and door: Brushed, grain 400, peak-to-valley height < 0.8 µm
- Mounting plate: Zinc-plated

### Protection category IP to IEC 60 529:

- IP 66

### Protection category IP to DIN 40 050-9:

- IP 69K

### Protection category NEMA:

- NEMA 13
- NEMA 4X

### Supply includes:

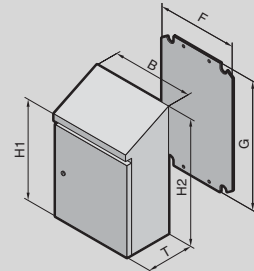
- Housing of all-round solid construction
- Door with press-fitted seal
- Interchangeable door catch
- Mounting plate

### Approvals:

- UL
- cUL

### Technical details:

Available on the Internet



## Compact enclosure HD

| Height (front) (H1) inches (mm)       | Packs of | 14 (350)        | 17 (430)        | 26 (650)        | 22 (550)        | 17 (430)        | 26 (650)        | 41 (1050)       | 49 (1250)       | Page |
|---------------------------------------|----------|-----------------|-----------------|-----------------|-----------------|-----------------|-----------------|-----------------|-----------------|------|
| Height (rear) (H2) inches (mm)        |          | 17 (437)        | 22 (549)        | 30 (769)        | 26 (669)        | 24 (601)        | 30 (769)        | 48 (1221)       | 56 (1421)       |      |
| Width (B) inches (mm)                 |          | 9 (220)         | 15 (390)        | 15 (390)        | 20 (510)        | 24 (610)        | 24 (610)        | 32 (810)        | 32 (810)        |      |
| Depth (T) inches (mm)                 |          | 6 (155)         | 8 (210)         | 8 (210)         | 8 (210)         | 12 (300)        | 8 (210)         | 12 (300)        | 12 (300)        |      |
| Mounting plate width (F) inches (mm)  |          | 6 (162)         | 13 (334)        | 13 (334)        | 18 (449)        | 22 (549)        | 22 (549)        | 29 (739)        | 29 (740)        |      |
| Mounting plate height (G) inches (mm) |          | 11 (275)        | 14 (355)        | 22 (570)        | 19 (470)        | 14 (355)        | 22 (570)        | 38 (955)        | 45 (1155)       |      |
| <b>Model No.</b>                      | 1 pc(s). | <b>1302.600</b> | <b>1306.600</b> | <b>1308.600</b> | <b>1307.600</b> | <b>1320.600</b> | <b>1310.600</b> | <b>1316.600</b> | <b>1317.600</b> |      |
| <b>Accessories</b>                    |          |                 |                 |                 |                 |                 |                 |                 |                 |      |
| Wall Spacer Bracket HD                | 1 pc(s). | 4000.100        | 4000.100        | 4000.100        | 4000.100        | 4000.100        | 4000.100        | 4000.100        | 4000.100        | 164  |
| Cable Gland HD                        |          | see page        | see page        | see page        | see page        | see page        | see page        | see page        | see page        | 568  |

# Hygienic Design

## Accessories



### Leveling Feet HD

**Benefits:**

- Minimizes cleaning time due to fully covered, permanently sealed threads
- Compensation of floor inclines up to an angle of 10° thanks to flexible base plate
- Leveling of bayed enclosures can be achieved on sloping floors, thanks to a large leveling range of 55 mm

**Load capacity:**

- Max. 5000 N static per leveling foot

**Material:**

- Stainless steel 1.4301 (AISI 304)

**Supply includes:**

- Assembly components and seals

| Thread | Leveling range inches (mm) | Floor attachment | Packs of | Model No.       |
|--------|----------------------------|------------------|----------|-----------------|
| M12    | 4.7 – 6.9 (120 – 175)      | without          | 4 pc(s). | <b>4000.200</b> |
|        |                            | with             | 4 pc(s). | <b>4000.210</b> |



### Wall Spacer Bracket HD

**Benefits:**

- Creates space for cleaning behind the housing
- Shorter assembly times by eliminating the need for an all-round seal
- Greater hygiene safety by avoiding an uncontrollable dead space or gap between the housing and wall

**Function principle:**

- Mounting on the wall optionally from the housing interior via a through-hole (max. M8) or from the rear via an integral M10 thread

**Material:**

- Stainless steel 1.4301 (AISI 304)

**Supply includes:**

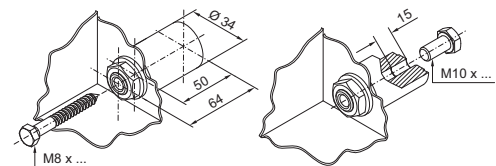
- Assembly components and seals

| Wall clearance inches (mm) | Packs of | Model No.       |
|----------------------------|----------|-----------------|
| 2 (50)                     | 1 pc(s). | <b>4000.100</b> |

**Mounting alternatives:**

Mounting from inside

Mounting from outside



### Enclosure Key HD

| Packs of | Model No.       |
|----------|-----------------|
| 1 pc(s). | <b>2549.600</b> |



### HD Bit

for universal key 2549.500

See page 491

| Packs of | Model No.       |
|----------|-----------------|
| 1 pc(s). | <b>2549.510</b> |



### Cam Lock HD

Hygienic Design version for easy, safe cleaning.

**Applications:**

- Compact enclosures AE stainless steel (except AE 1017.XXX and AE 1019.XXX)
- May be integrated into customized applications, e.g. covers of machine panels

**Material:**

- Stainless steel 1.4404 (AISI 316L)

| Packs of | Model No.       |
|----------|-----------------|
| 1 pc(s). | <b>2304.010</b> |



**Accessories:**

- Enclosure key HD, see page 164

### Rails for Interior Fitting

#### for compact enclosures HD

Mounted on the existing threaded bolts.  
With TS system punchings on three sides.

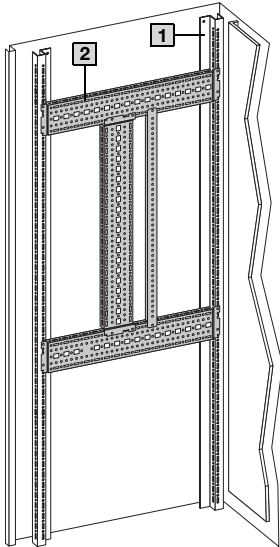
#### Material:

– Carbon steel, zinc-plated

#### Supply includes:

– Assembly components

| Length inches (mm) | Packs of | Model No.       | Page |
|--------------------|----------|-----------------|------|
| 20 (510)           | 4 pc(s). | <b>5001.050</b> | 521  |
| 28 (710)           | 4 pc(s). | <b>5001.051</b> | 521  |
| 36 (910)           | 4 pc(s). | <b>5001.052</b> | 521  |
| 44 (1110)          | 4 pc(s). | <b>5001.053</b> | 521  |

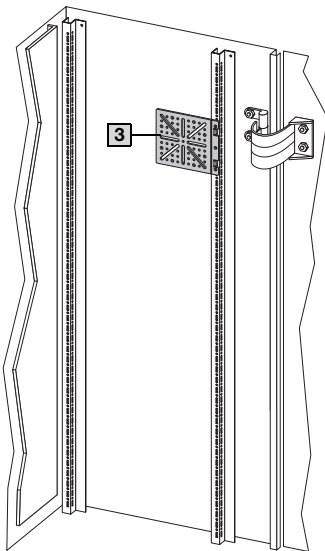


#### Interior Fitting, Door

| Housing          | 1                | 1                    | 1                    |
|------------------|------------------|----------------------|----------------------|
|                  |                  |                      |                      |
| <b>Model No.</b> | <b>Model No.</b> |                      |                      |
| 1316.600         | 5001.052         | 5001.050             | 5001.050             |
| 1317.600         | 5001.053         | 5001.051<br>5001.050 | 5001.051<br>5001.050 |

#### Interior Fitting, Enclosure

| Housing              | 1                              | 2                                | 3                    |
|----------------------|--------------------------------|----------------------------------|----------------------|
|                      | Rails for Interior Fitting<br> | TS System Chassis 17 x 73 mm<br> | Mounting Plates<br>  |
| <b>Model No.</b>     | <b>Model No.</b>               | <b>Model No.</b>                 |                      |
| 1308.600<br>1310.600 | 5001.050                       | –                                | –                    |
| 1316.600             | 5001.052                       | 8612.130<br>(on lock side only)  | 8612.400<br>8612.410 |
| 1317.600             | 5001.053                       | 8612.130<br>(on lock side only)  | 8612.400<br>8612.410 |



# Rittal – The System.

Faster – better – everywhere.

